



OPERATION INSTRUCTION

Wet vacuum cleaner

W70

**READ ALL INSTRUCTIONS BEFORE
USING**

Introduction

Dear Customer.

We thank you for choosing Ermator as your supplier.

We hope that the Wet vacuum cleaner from Ermator will be to your satisfaction and meet your expectations.

Ermator have been a manufacturer of professional dust extractors since 1967 and has over the years acquired a genuine technical knowledge in this area. We are working hard with improvement in our product segment and will continue to provide the market with new equipment.

Notice!

This instruction does only cover the wet vac type Ermator W70.

The wet vacuum cleaner Ermator W70 are developed for cleaning of construction area, water cooled drilling machines etc.

If the wet vac is used for other applications or been used in other ways then explained in this instruction book, Ermator will not take any responsibility.

Before starting to use the machine, please read carefully the safety regulations.

Read the complete instruction book before start using the Ermator W70.

All spare part used for the Ermator W70 must be recognized by Ermator AB.

Unpacking

When unpacking the machine, please check that the following accessories are included:

- The hose with end fittings.
- Steel tube.
- Floor nozzle.
- Crevice tool.

If some of above mention parts are missing, please contact your local distributor or our sales representative.

Safety instructions

Handling

Warning

- Cables damaged through crunching or cracking can be dangerous if used and should be replaced immediately. Risk of personal injury.

Warning

- Do not connect the machine to an unearthed socket. Risk of personal injury.

Warning

- Make sure the assembly area is firm, so the Dust Extractor dose not tip over. Risk of personal and material injury.

Warning

- Risk for pinch injuries when handling the toggle fastener.

Warning

- Do not vacuum hot or smouldering particles, as the machine can catch fire. If a fire should break out, pull out the plug from the socket and extinguish using the available fire-fighting equipment.

Warning

- The machine must not be use in environments where explosive gases can occur. Large risk for explosions.

Warning

- Do not look into the suction pipe or suction hose if blocked. Large risk of injury to the eyes.

Warning

- Do not point the suction hose towards body parts when the machine is running. Avoid placing your hand or other parts of the body against the suction inlet if the suction hose is not fitted. Risk of personal injury.

Warning

- Check, when lifting the machine, that the dust container is empty and that no one is standing under the lifted machine. Risk for personal injury and material damage

Service

Warning

- Remove the plug from the wall socket when carrying out maintenance work. Risk of personal injury. Replace all guards over the motor and fan components once servicing is complete.

Warning

- Health impairing dust can be spread during filter and bags replacement. Accordingly, the user should wear protective glasses, protective gloves, and a breathing mask conforming to protection class FFP3.

Function

The motor is started by the switch. Dust laden air is then sucked through the inlet valve at high speed via the suction hose. The air is slowed down by the cyclone and coarse dust particles are separated out, partly by centrifugal force and partly by gravity. Air and finer particles then pass through the fine filter where separation is made.

Use

Before using must the user be educated in handling the vacuum cleaner and the dust.

WARNING

Connect the electric plug to a power outlet with the correct voltage, see the nameplate.

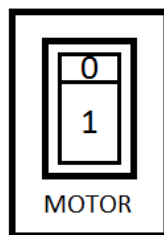
From time to time the filter must be cleaned or replaced. It's appropriate when the work is completed or when there is poor suction.

Connect proper evacuation hose. Fix the free end of the hose.

Switch position:

0: motor off

1: motor on



Fit the suction h

There is a hose intake

ion apparatus

the tank. Lift the hose lock and insert the suction hose's metal adapter into the intake. Lower the hose lock into the recess of the adapter. The hose lock fixes the adapter in the hose intake and is lifted when the suction hose is to be removed.

Fit the nozzle on the hand pipe

The floor nozzle has adjustable wheels. Adjust the wheel setting so as to achieve the best suction effect. Adjust the wheels with the knob which is located on the rear side of the nozzle. The wheels and rubber strips of the nozzle are replaceable. Ensure that the nozzle is kept in good condition.

After use

Switch off the suction apparatus with the switch. Remove the plug on the electrical cable from the electrical outlet. Do not pull the electrical cable!

Empty and clean the suction apparatus and the accessories used. If necessary, the tank and accessories can be flushed clean.

Never leave water or wet dirt in the suction apparatus. This can cause bad smells and poor hygiene.

Filter change

Risk of dust dispersion - Use of personal safety equipment

Unhealthy dust can be spread during filter change. Accordingly, the user should wear protective glasses, protective gloves, and a breathing mask conforming to protection class FFP3.

1. Remove the plug from the electric outlet.
2. Lift off the filter holder with the filter.
3. Loosen the fingernut and remove the filter cap and filter.
4. Check the sealing on the filter holder.
5. Assemble the new filter.
6. Clean all other parts.

WARNING

Switch off the machine and pull the plug out of the socket.

Service

WARNING

Before cleaning and servicing the machine, you must switch the machine off and pull out the plug from the outlet.

- Avoid cleaning with high pressure cleaner. If necessary do not point at the openings on the machine, especially the opening for the cooling air.
- Before moving the machine from the working area, the machine must be cleaned. Furthermore must the inlet be locked with the expanding plug attached.
- All other equipment must be regarded contaminated and be treated thereafter.
- If possible use a special suitable room.
- Proper personal protective equipment must be used.
- All parts after service, which are contaminated, must be taken care of in a proper way in plastic bags according to all regulations.
- If the vacuum cleaner has to be used for other purposes, it is extremely important that the vacuum cleaner will be cleaned, to avoid spreading of hazardous dust.

Accessories

Following is parts that should be changed on a regular basis:

| Part.no. | Description | No/machine |
|-----------------|--------------------|-------------------|
| 1337019 | 400-2C C-filter | 1 pc |

Spare parts, see enclosed spare parts list.

Warranty

All Pullman suction devices and accessories have a 12-month factory warranty for material and manufacturing defects. You can extend the warranty to 36 months by returning the attached warranty slip. Do not attempt to repair the suction apparatus without the consent of the manufacturer. The warranty does not cover defects which are the result of normal wear and tear, negligence, defective use, unauthorised repair or the suction apparatus being connected to the incorrect voltage.

In the event of any complaint, the suction apparatus or an agreed part of it must be returned to us or our authorised representative for warranty examination and for any warranty repair or replacement.

Problem solving

The W70 and are manufactured for severe environments and tasks, but the user must notice that the machine contents of components which must be protected from hits and blows. Filter sealings connections are carefully chosen to serve the operator. Therefore must the machine be treated with knowledge as to work correctly for many years.

| Problem | Cause | Procedure |
|------------------------------|---|---|
| Motor don't start | No current Defect cable Defect switch | Connect the machine Change Change |
| Motor stops immediately | Wrong fuse | Connect to proper fuse |
| Motor runs, but no suction | Hose not connected Hose blocked | Connect the hose Clean the hose |
| Motor runs, but poor suction | Hole on the hose Blocked filter Suction unit loose Dirt in the hose or intake Defect sealings | Change hose Change filter Adjust Clean the hose and intake Change current sealing |
| Dust is blowing from motor | Defect or loose filter | Adjust or change |
| Abnormal noise | | Order service |

SAVE THESE INSTRUCTIONS!

TECHNICAL DATA

| W70 | |
|------------------------|---|
| VOLTAGE | 230 Vac, 1-phase |
| POWER | 1300 W |
| MAX AIRFLOW | 200 m ³ /h |
| MAX VACUUM | 22 kPa |
| HOSE | Ø 38-50mm |
| INLET | Ø 50mm |
| MAIN FILTER | Filter surface 0.6m ² 99.5% |
| SOUND LEVEL | 75 dB(A) |
| DUST COLLECTION SYSTEM | 55 l disp. bag (580x780mm) |
| DIMENSION LxWxH | 600x570x1250mm |
| WEIGHT | 28 kg |

**FÖRSÄKRAN OM ÖVERENSSTÄMMELSE
DECLARATION OF CONFORMITY
DECLARATION DE CONFORMITÉ
ERKLÄRUNG DER ÜBERSTIMMUNG
SAMSVARSERKLØRING**

**Pullman Ermator AB
Industrivägen 10
S-777 34 SMEDJEBACKEN**

*Försäkrar under eget ansvar att maskinen
Declare under our sole responsibility that the machine
Certifie sous sa propre responsabilité que le produit ciaprès
Versichern auf eigener verantwortung, dass das Produkt
Forsikrer under eget ansvar at maskinen*

W70 **Nr./No: 100055 0001-xxxx**

Tillv.år/Manufact.year/Baujahr: 2010-

*som omfattas av denna försäkring är i överensstämmelse med standarder:
included in this declaration, follows the provisions of the:
est conforme aux aux normes suivantes:
den folgenden Normen entspricht:
er i overensstemmelse med standarder:*

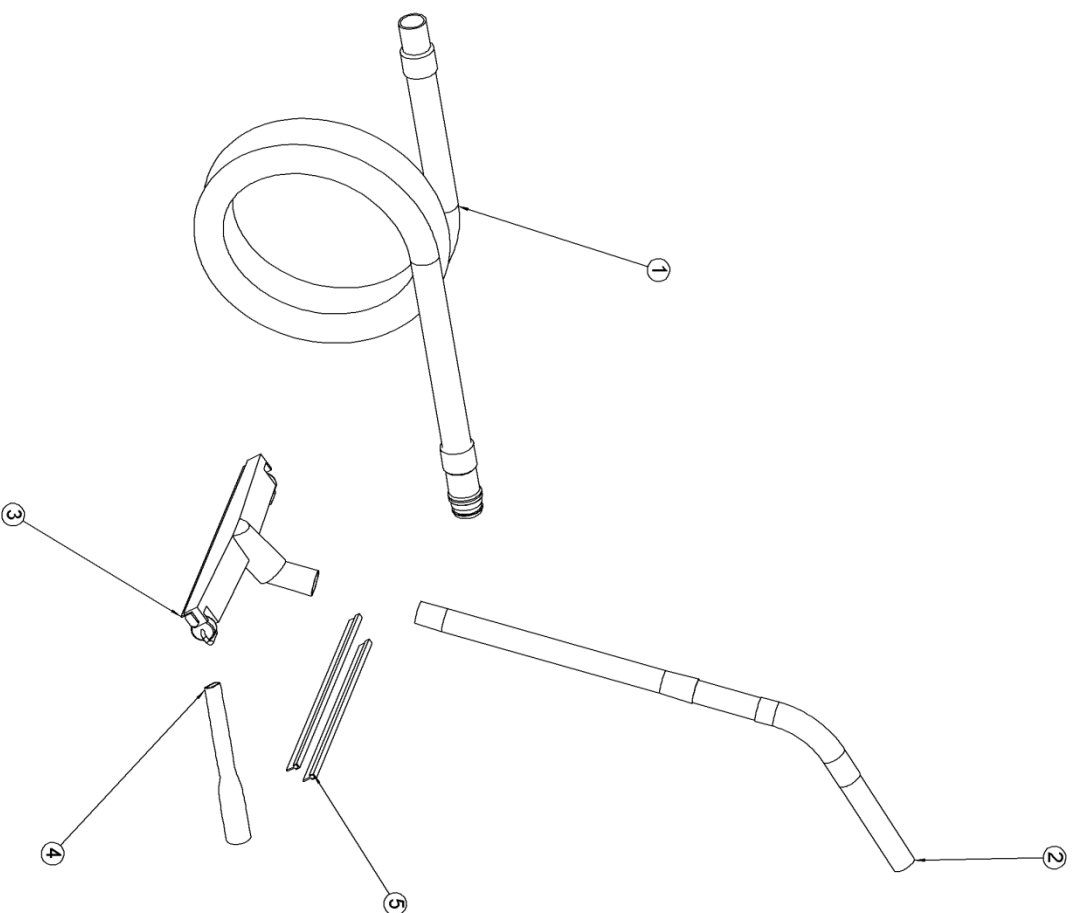
**SS-EN 292-1, SS-EN 60 204-1 (1993.11.30)
SS-EN 55011:1989
SS-EN 50082-1
SS-EN 60335-1, SS-EN 60335-2-69 & A1**

enligt villkoren i/according to/selon/aut/i henhold til vilkårene i
**Machine Directive 98/37/EEG
Low Voltage Directive 73/23/EEG
EMC Directive 89/336/EEG**

SMEDJEBACKEN 2006.01.01

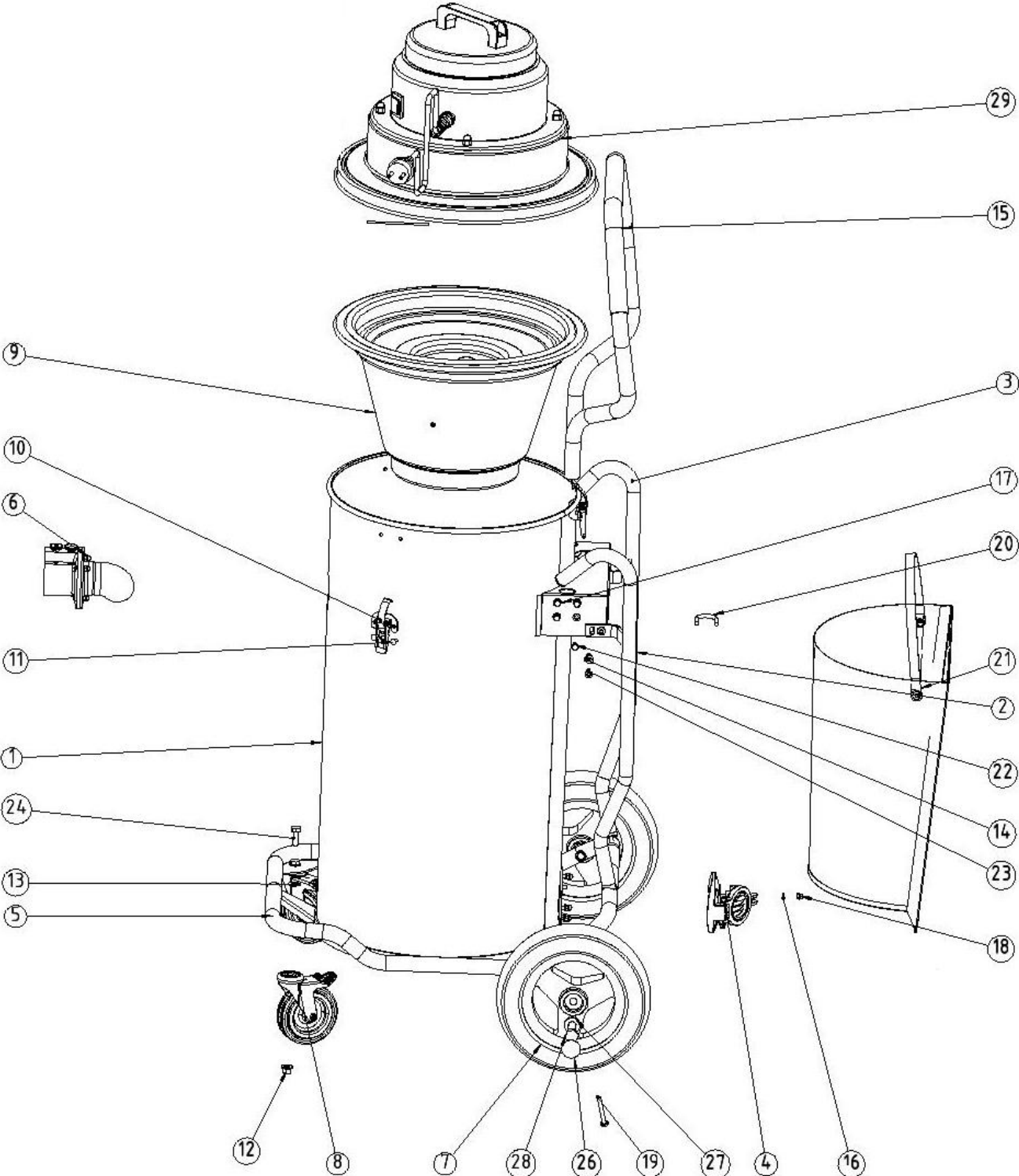
Torbjörn Bengtsson
VD
General Manager

ACCESSORIES W70



| POS. | QTY | NUMBER | BENÄMNING | DESCRIPTION |
|------|-----|---------|---|---|
| 1 | 1 | 1225076 | SUGSLANG 51 mm x 3 m, SVART | SUCTION HOSE 51 mm x 3 m, BLACK |
| 2 | 1 | 6324034 | HANDRÖRSSATS, SVART | STEEL TUBE KIT, BLACK |
| 3 | 1 | 1326086 | GOLVMUNSTYCKE 38 mm x 450 mm | FLOOR TOOL 38 mm x 450 mm |
| 4 | 1 | 1226035 | FOGMUNSTYCKE GUMMISTRIPS (L=400/445 mm) | CREVICE TOOL RUBBER BLADES (L=400/445 mm) |
| 5 | 1 | 1340004 | | |

W70



| | | | |
|----------|------|-------------|----------------------------|
| 29 | 1 | 1204025 | SUCTION UNIT |
| 28 | 2 | 200900118 | M6SM12x80 |
| 27 | 2 | 200900164 | Washer of big wheel |
| 26 | 2 | 200700067 | COVER |
| 25 | 1 | 201000529 | SEALING |
| 24 | 2 | 10461 | M6SM8x25 |
| 23 | 8 | 200700180 | MK6S 4,6 M6x20 BLACK |
| 22 | 8 | 1360087 | DOME NUT M6 |
| 21 | 1 | 201000036 | GK70 |
| 20 | 4 | 200700163 | U-BOLT M6 C-C 32 |
| 19 | 2 | 200700506 | SCREW |
| 18 | 4 | 1360051 | DOME NUT M5 A2 |
| 17 | 8 | 1360089 | NYLONBRICKA 6.4x12x1.5 |
| 16 | 8 | 1360148 | NYLON WASHER 5,3x10x1 |
| 15 | 1 | 200600544a | HANDLE |
| 14 | 4 | 8359002 | Rivet nut |
| 13 | 4 | 10463 | SRB9 WASHER (DIA 9x18x1.5) |
| 12 | 2 | 10462 | M8 LOCK NUT |
| 11 | 6 | 1359015 | AD 66 RIVET (4.8x9,5) |
| 10 | 3 | 1341004 | HOLDER |
| 9 | 1 | 1220005 | 400 COMBINED FILTER |
| 8 | 2 | 200700282 | SWIWEL WHEEL |
| 7 | 2 | 200700020 | WHEEL R250-50-2-ESK |
| 6 | 1 | 1344002 | C07P TANK INLET |
| 5 | 1 | 201000010 | Wagon W70 |
| 4 | 1 | 201000155 | Exit Cover |
| 3 | 1 | 200700203 | PROTECTION RIGHT |
| 2 | 1 | 200700203a | PROTECTION LEFT |
| 1 | 1 | 201000298 | Tank Assembly ex.W70 |
| ITEM NO. | Qty. | PART NUMBER | DESCRIPTION |



Ermator

