



# **ORIGINAL OPERATING INSTRUCTIONS**

## **T-Line Dust Extractor**

**T7500**

**T8600**

**T10000**

**T15000**

**T18000**

**READ ALL INSTRUCTIONS BEFORE USE**

## Introduction

Dear Customer,

Thank you for choosing Pullman Ermator as your supplier.

We hope that the T-Line dust extractor will be to your satisfaction and meet your expectations.

Pullman Ermator have manufactured professional dust extractors since 1966 and has over the years acquired a genuine technical knowledge in this area. We are continuously striving to improve our products in our product segment and will continue to supply the market with new equipment.

### Notice!

**These instructions are only for T-Line Dust Extractors.**

**The T-Line Dust Extractors are designed to clean construction areas and be connected to small electrical machines such as drills, grinders etc. The machine is suitable for picking up dry, non-flammable dust and debris in and indoor environment. It is not suitable for picking up liquids.**

**Pullman Ermator will not be held responsible if the dust extractor is used for other applications or been used in ways other than those outlined in this instruction manual.**

**Please pay particular attention to the safety regulations.**

**Read the complete instruction manual before using your dust extractor.**

**All spare parts used with the dust extractors must be those specified by Pullman Ermator.**

## Table of contents

<b>1</b>	<b>SAFETY INSTRUCTIONS</b>	<b>8</b>	<b>WARRANTY</b>
<b>2</b>	<b>UNPACKING</b>	<b>9</b>	<b>PROBLEM SOLVING</b>
<b>3</b>	<b>FUNCTION</b>	<b>10</b>	<b>TECHNICAL DATA</b>
<b>4</b>	<b>FILTER CLEANING</b>	<b>11</b>	<b>DECLARATION OF CONFORMITY</b>
<b>5</b>	<b>DUST STORAGE SYSTEM</b>	<b>12</b>	<b>EXPLODED VIEWS</b>
<b>6</b>	<b>FILTER CHANGE</b>	<b>13</b>	<b>NOTES</b>
<b>7</b>	<b>SERVICE</b>		

# 1. SAFETY INSTRUCTIONS

When using an electrical appliance, basic precautions should always be followed, including the following:

## **WARNING – To reduce the risk of fire, electric shock or injury:**

- Cables damaged through crushing or splitting can be dangerous if used and should be replaced immediately. Risk of personal injury.
- Make sure the assembly area is firm, so the dust extractor does not tip over. Risk of personal and material injury.
- Risk of pinching when handling the toggle fasteners.
- The machine must not be used in environments where explosive gases may be present. Serious risk of explosion.
- Improper connection of the equipment-grounding conductor can result in a risk of electrical shock. Check with a qualified electrician or service person if you are in doubt as to whether the outlet is properly grounded. Do not modify the plug provided with the machine. If it will not fit the outlet. Have a proper outlet installed by a qualified electrician.
- Before using the machine, make sure that the power & voltage corresponds with the voltage shown on the machines rating plate.
- Do not leave machine when plugged in. Unplug cord from outlet when not in use and before cleaning or servicing machine.
- Do not use outdoors or on wet surface, this machine is for indoor and dry use only.
- Do not allow to use as a toy. Close attention is necessary when used by or near children.
- Use only as described in this manual. Use only manufacturers recommended attachments.
- Operators shall be adequately instructed on the use of the machine
- This machine is not intended for use by persons (including children) with reduced physical, sensory or mental capabilities, or lack of experience and knowledge.
- Do not use with damaged cord or plug. If the machine is not working as it should, has been dropped, damaged, left outdoors or dropped in water. Make sure it is repaired by a qualified person.
- Do not pull or carry by cord, use cord as handle, close a door on cord, or pull cord around sharp edges or corners. Do not run the machine over cord. Keep cord away from heated surfaces.
- Do not unplug by pulling on cord. To unplug, grasp the plug. Not the cord.
- Do not handle plug or machine with wet hands.
- Regularly inspect cord and plug for damage. If cord is damaged, it must be replaced by a qualified person in order to avoid hazard.
- Do not put any object into openings. Do not use with any opening blocked (accept during filter cleaning procedure). Keep free of dust, hair and anything that may reduce airflow.
- Keep hair, loose clothing, fingers and all parts of body away from openings and moving parts.
- Turn off all controls before unplugging.
- Do not use to pick up flammable or combustible liquids, such as gasoline, or use in areas where they may be present.
- Do not pick up any type of liquids.
- Do not pick up anything that is burning or smoking, such as cigarettes, matches or hot ashes.
- Use extra care when cleaning on stairs.
- Do not use without dust bag and/or filters in place. Replace collection system and/or filters as described in manual.
- If using an extension cord make sure the cord rating is suitable for this machine.
- Do not modify machine from its original design.
- Keep children and unauthorized persons away from machine when in use.
- All repairs must be performed by a qualified service person. Use only manufacturer-supplied or equivalent replacement parts.
- Do not expose machine to rain or moisture. Store indoors only.
- Connect to a properly grounded outlet only. See grounding instructions.

## **THERMAL PROTECTION**

- The dust extractor is equipped with a safety thermal protector to prevent motor from overheating. Should thermal protector activate, turn off machine, unplug power cord and check for full dust bag, vacuum hose clog or filter blockage. It may take up to 45 minutes for the thermal protector to reset.

## **GROUNDING INSTRUCTION**

- The dust extractor must be grounded. If it should malfunction or breakdown, grounding provides a path of least resistance for electric current to reduce the risk of electric shock. The dust extractor is equipped with a cord having an equipment-grounding conductor and grounding plug. The plug must be inserted into an appropriate outlet that is properly installed and grounded in accordance with all local codes and ordinances.

## **TRANSPORTATION INSTRUCTION**

- Unit must be securely fastened during transportation with provided hook mounts on other side of the unit.
- Locking caster to be secured
- Longopac to be emptied before transportation
- Propane units **MUST** have battery and propane disconnected also secured before and during transportation.
- Check local regulation for propane transportation guidelines

## **STORAGE INSTRUCTION**

- Units must be stored inside away from outside elements.
- Locking casters to be secured.
- Unit must be disconnected from power source.

## **IN CASE OF ACCIDENT**

- Contact local authorities.
- Turn off power source.
- Disconnect unit.

## **2. UNPACKING**

When unpacking the machine, please check that the following accessories are included:

- Hose with end fittings.
- Wand.
- Floor nozzle.
- Y coupling (See table just below)

MODEL	USCS	METRIC
T7500	3" to two 3"	76mm to two 76mm
T8600	3" to two 3"	76mm to two 76mm
T10000	3" to two 3"	76mm to two 76mm
T15000	4" to two 3"	102mm to two 76mm
T18000	4" to two 3"	102mm to two 76mm

If any of the above-mentioned parts are missing, please contact your local distributor or our sales representative. For models that do not already have the front casters assembled due to packaging limitations. Assemble the front casters using the using bolt or nut and washer that are included in the package depending on your application.

Protect the environment:

Please dispose of packaging materials and used machine components in an environmentally safe way according to local disposal regulations. Always remember to recycle.

### 3. FUNCTION

**The machine is designed for vacuuming and separating dry, non-combustible dust with an explosion limit value of  $>0.1\text{mg/m}^3$ .**

The dust extractor is started by the green button on the electrical cabinet, it is stopped by pressing the red button that is located directly below the start button.

**Note:**

If the red lamp between the red and green buttons light up. There is a phase error. Switching two of the phases will solve this issue. This is a safety measure to ensure that the pump doesn't start to blow air instead.

Dust-laden air is then sucked through the inlet valve at high speed via the suction hose. The air is slowed down by the cyclone and coarse dust particles are separated out, partly by centrifugal force and partly by gravity. Air and finer particles then pass through the double filter system where separation is made. The machine is designed for filter cleaning by reverse air pulse.

The separated dust accumulates in the cyclone until the machine is switched off, when it drops through the bottom flap into the plastic bag. The filter cleaning process is not completed before it is clear that the dust inside the tank has fallen down into the collection bag. In some extreme cases the adhesive ability of the dust must be broken manually. This can be done by hitting the dust through the bag or tapping the tank using i.e. a rubber hammer.

### Extension cords

**Approved for machines > 250 V:** SO, SOO, ST, STO & STOO

**Approved for machines < 250 V:** All types

Only use an extension cord that can handle the machines rated current with corresponding plugs.

Model	Dist box	201300409	201300410	201300411	201300412	201300413	201300414	201300415	201300424
T7500 230 V	NO								1
T7500 230 V DIST	YES	1	1						
T8600 480 V	YES			1	1	1			
T10000 480 V	YES			1	1	1			
T15000 230 V	NO								1
T18000 480 V	YES						1	1	

**Our models are supplied with Hubbel inlets and receptacles. (see table below)**

Part no	Hubbel part no	Description
201300409	HBL4100R9W	FEMALE RECEPTACLE 100A 230V 4100R9W
201300410	HBL4100B9W	INLET MALE 100A 230V 4100B9W
201300411	CS8175	INLET MALE 50A 480V CS8175
201300412	CS8169	RECEPTACLE FEMALE 50A 480V CS8169
201300413	HBL7774WO	COVER 50A 480V HBL7774WO
201300414	HBL460B7W	INLET MALE 60A 480V 460B7W
201300415	HBL460R7W	RECEPTACLE FEMALE 60A 480V 460R7W
201300424	CS8375	INLET MALE 50A 250V CS8375

## 4. FILTER CLEANING

The filter must be cleaned from time to time. This must be done before changing the bag collection system and should also be done when work is completed or when there is poor suction.

**Procedure:** Cover the inlet, if applicable, use attached cover. First let the machine build up vacuum for four to five seconds then quickly push down on the key and release it. Repeat the procedure five times. It is important to let the machine rebuild the vacuum in between every repetition.

**Turn off the motor and wait until it stops completely, then uncover the inlet.**

If suction remains poor, the pre-filter needs to be replaced. If suction still remains poor afterwards, the Hepa filters need to be replaced. See instructions in chapter 6. FILTER CHANGE.

## 5. DUST STORAGE SYSTEM

The dust extractors are mainly equipped with Longopac system for effective dust storage or a regular plastic bag system depending on model. Longopac is a 22 m long plastic tube that will be divided into plastic bags using the zip ties attached with the machine.

**To assemble a new Longopac bag:** Release the belt holding the last bag. Remove the holder, put in a new Longopac bag & pull out the inner end upwards. Assemble the holder on to the machine and strap the opening facing upwards with the belt. Pull down the outside end and close it using a zip tie.

All dust extractors can be used with original Pullman Ermator dust bags for single use. Also all models can be fitted with the longopac system.

Only change Longopac or regular bag after filter cleaning cycle have been completed.

## 6. FILTER CHANGE

**Risk of dust dispersion - Use personal safety equipment**

Unhealthy dust can be spread during filter change. Accordingly, the user should wear protective glasses, protective gloves, and a breathing mask.



### WARNING

**Remember to switch off the machine and pull the plug out of the outlet before servicing.**

### Pre-filter

Loosen the latches between the tank and the lower cyclone. Loosen the latches at the hose connection between the tank and the absolute filter cover. Rotate the tank forward. Rotate the filter plate counter clockwise 10 degrees and carefully turn filter and holder upside down. Place a plastic bag over the filter unit. Lift the filter carefully and pinch up the bag by hand and then tie the bag up. This bag must be properly disposed of.

Insert a new complete filter package in reverse order. Only original filters may be used

### Important:

It is not possible to replace individual tubes. If one is broken, the complete filter needs to be replaced.

### Hepa Filter

Loosen the latches holding the filter cover and carefully lift the filter up and into a plastic bag. This bag must be properly disposed of. Insert new filters in reverse order.

### Important:

Hepa filters can't be cleaned, trying this might destroy it. When installing the replacement filter, make sure to not touch the inside of the filter. Any kind of force/damage on the inside of filter media will destroy the new filter.

## 7. SERVICE

- When cleaning and servicing the machine, you must switch off the machine and remove the plug from the outlet.
- Avoid cleaning with a high pressure cleaner. If necessary, do not direct at the openings on the machine, especially the opening for cooling air.
- Before moving the machine from the work area, the machine must be cleaned.
- All other equipment must be regarded as contaminated and be treated thereafter.
- If possible, use a special suitable room.
- Proper personnel protective equipment must be used. Dust can be spread when the coarse filter and the absolute filter are replaced that can be hazardous to health. Accordingly, the user should wear protective glasses, protective gloves, and a breathing mask conforming to protection class FFP3.
- All parts which are contaminated after service must be properly disposed of in plastic bags according to all regulations.
- If the machine has to be used for other purposes, it is extremely important that the machine is cleaned, to avoid the spread of hazardous dust.
- Do not puncture the Hepa filter. Risk of dust dispersion.

### replacement parts, filters and dust collection system

Part no:	Description	T7500	T8600	T10000	T15000	T18000
1376013	Longopac (4-bags)	1	1	1	1	1
1276008	Plastic bags (25-pcs)	1	1	1	1	1
200600596	PRE-FILTER (ex. T7500)	1	1	N/A	N/A	N/A
201300436	PRE-FILTER (ex. T10000)	N/A	N/A	1	N/A	N/A
200700231	PRE-FILTER (ex. T18000)	N/A	N/A	N/A	1	1
200800006	PRE-FILTER NO TENSIONER (ex. T18000)	N/A	N/A	N/A	1	1
200600595	HEPA FILTER 100% DOP	2	2	3	4	4
200600595a	HEPA FILTER 100% DOP USA	2	2	3	4	4

## Caution

The machine is for indoor use only & shall be stored indoors only

This appliance is not intended for use by persons (including children) with reduced physical, sensory or mental capabilities, or lack of experience and knowledge, unless they have been given supervision or instruction concerning use if the appliance by a person responsible for their safety.

Children should be supervised to ensure that they do not play with the appliance.

## 8. WARRANTY

All Pullman Ermator devices and accessories have a 12-month factory warranty for material and manufacturing defects. The warranty extends to 36 months when returning the attached warranty slip. Do not attempt to repair the suction apparatus without the consent of the manufacturer.

The warranty does not cover defects which are the result of normal wear and tear, negligence, defective use, unauthorised repair or the suction apparatus being connected to the incorrect voltage.

In the event of any complaint, the suction apparatus or an agreed part of it must be returned to us or our authorised representative for warranty examination and for any warranty repair or replacement.

## 9. PROBLEM SOLVING

The dust extractors are designed and manufactured for severe environments and tasks, but the user must note that the machine must be protected from knocks and blows. Filter, seals, attachments, and connections are carefully adapted and selected with regard to the operator's work environment. Therefore, the operator and service personnel must treat the machine with care in order for it to work correctly for many years.

Issue	Cause	Solution
Motor doesn't start	No power	Plug in machine
	Cable defective	Replace cable
	Switch defective	Replace switch
	Contactor combination defective	replace contactor combination
	Phase error (red lamp lights up)	switch two phases
Motor stops immediately after starting	Wrong fuse	Connect to correct fuse
	Shortcut in cable/machine	Order service
Motor runs but there is not suction	Hose not connected	Connect hose
	Hose blocked	Clean hose
	No dust collection bag	Fit dust collection system
Motor runs but poor suction	Hole in hose	Replace hose
	Filter clogged	Clean filter/Replace filter
	Loose top cover	Adjust
	Dirt in the flap	Clean the flap
	Defective gaskets	Replace affected gaskets
Dust blown from motor	Wrongly assembled or damaged filtersystem	Adjust/Replace filters
Abnormal noise		Order service

**SAVE THESE INSTRUCTIONS!**



# 10. TECHNICAL DATA

Data	Unit	T7500 230 V	T7500 400 V	T8600F 400 V	T8600 480 V
Voltage (three phase)	V	230	400	400	480
Power (max)	kW	7,5	5,5	8,6	8,6
	HP	10	7,3	11,5	11,5
airflow (max)	m3/h	600	600	600	600
	cfm	354	354	354	354
Vacuum (max)	kPa	28	28	28	28
	Inch "	110	110	110	110
Main hose	metric	10m x 76 mm	10m x 76 mm	10m x 76 mm	10m x 76 mm
	USCS	32' x 3"	32' x 3"	32' x 3"	32' x 3"
Inlet	metric	76 mm Camlock	76 mm Camlock	76 mm Camlock	76 mm Camlock
	USCS	3" Camlock	3" Camlock	3" Camlock	3" Camlock
Pre-filter	%	>99,5%@1um	>99,5%@1um	>99,5%@1um	>99,5%@1um
Pre-filter area	metric	2,9 m <sup>2</sup>	2,9 m <sup>2</sup>	2,9 m <sup>2</sup>	2,9 m <sup>2</sup>
	USCS	31,2 ft <sup>2</sup>	31,2 ft <sup>2</sup>	31,2 ft <sup>2</sup>	31,2 ft <sup>2</sup>
Hepa filter EN1822-H13	%	>99,99%@0,3um	>99,99%@0,3um	>99,99%@0,3um	>99,99%@0,3um
total hepa filter area	metric	5 m <sup>2</sup>	5 m <sup>2</sup>	5 m <sup>2</sup>	5 m <sup>2</sup>
	USCS	53,8 ft <sup>2</sup>	53,8 ft <sup>2</sup>	53,8 ft <sup>2</sup>	53,8 ft <sup>2</sup>
Sound level	dB(a)	74	74	74	74
Dust collection system	type	Longopac	Longopac	Longopac	Longopac
Dimensions (L*W*H)	metric	1245x686x1753	1245x686x1753	1245x686x1753	1245x686x1753
	USCS	49x27x69"	49x27x69"	49x27x69"	49x27x69"
Weight	metric	206 kg	206 kg	206 kg	206 kg
	USCS	454 lbs	454 lbs	454 lbs	454 lbs

Data	Unit	T10000 400 V	T10000 480 V	T11000 400 V	T15000 230 V	T18000 480 V
Voltage (three phase)	V	400	480	400	230	480
Power (max)	kW	11	11	11	15	18
	HP	14,7	14,7	14,7	20,1	24,1
airflow (max)	m3/h	900	900	1100	1100	1100
	cfm	530	530	648	648	648
Vacuum (max)	kPa	30	30	30	30	30
	Inch "	118	118	118	118	118
Main hose	metric	10m x 76 mm	10m x 76 mm	10m x 76 mm	10m x 76 mm	10m x 76 mm
	USCS	32' x 3"	32' x 3"	32' x 3"	32' x 3"	32' x 3"
Inlet	metric	76 mm Camlock	76 mm Camlock	102 mm Camlock	102 mm Camlock	102 mm Camlock
	USCS	3" Camlock	3" Camlock	4" Camlock	4" Camlock	4" Camlock
Pre-filter	%	>99,5%@1um	>99,5%@1um	>99,5%@1um	>99,5%@1um	>99,5%@1um
Pre-filter area	metric	3,9 m <sup>2</sup>	3,9 m <sup>2</sup>	4,9 m <sup>2</sup>	4,9 m <sup>2</sup>	4,9 m <sup>2</sup>
	USCS	41,9 ft <sup>2</sup>	41,9 ft <sup>2</sup>	52,7 ft <sup>2</sup>	52,7 ft <sup>2</sup>	52,7 ft <sup>2</sup>
Hepa filter EN1822-H13	%	>99,99%@0,3um	>99,99%@0,3um	>99,99%@0,3um	>99,99%@0,3um	>99,99%@0,3um
total hepa filter area	metric	7,5 m <sup>2</sup>	7,5 m <sup>2</sup>	10 m <sup>2</sup>	10 m <sup>2</sup>	10 m <sup>2</sup>
	USCS	80,7 ft <sup>2</sup>	80,7 ft <sup>2</sup>	107,6 ft <sup>2</sup>	107,6 ft <sup>2</sup>	107,6 ft <sup>2</sup>
Sound level	dB(a)	74	74	78	78	78
Dust collection system	type	Longopac	Longopac	Longopac	Longopac	Longopac
Dimensions (L*W*H)	metric	1400x736x1727mm	1400x736x1727mm	1400x788x1804mm	1400x788x1804mm	1400x788x1804mm
	USCS	55x29x68"	55x29x68"	55x31x71"	55x31x71"	55x31x71"
Weight	metric	336 kg	336 kg	395	408 kg	408 kg
	USCS	740 lbs	740 lbs	871 lbs	900 lbs	900 lbs

**11. DEKLARATION OM ÖVERENSSTÄMMELSE**  
**11. DECLARATION OF CONFORMITY**  
**11. DECLARATION DE CONFORMITÉ**  
**11. ERKLÄRUNG DER ÜBERSTIMMUNG**  
**11. SAMSVARSERKLØRING**

**Pullman Ermator AB**  
**Industrivägen 10**  
**S-777 34 SMEDJEBACKEN**

*Försäkrar under eget ansvar att maskinen*  
*Declare under our sole responsibility that the machine*  
*Certifie sous sa propre responsabilité que le produit ciaprès*  
*Versichern auf eigener verantwortung, dass das Produkt*  
*Forsikrer under eget ansvar at maskinen*

Model	Serial number	M/F year	Model	Serial number	M/F year
T7500 230 V	0700492c0001-xxxx	2007-	T10000 480 V	1300425 0001-xxxx	2013-
T7500 400 V	0600403 0001-xxxx	2006-	T11000 400 V	0700243 0001-xxxx	2007-
T8600F 400 V	0600403f0001-xxxx	2006-	T15000 230 V	1300497 0001-xxxx	2013-
T8600 480 V	0600403a0001-xxxx	2006-	T18000 480 V	0700243b0001-xxxx	2013-
T10000 400 V	1300425a0001-xxxx	2013-			

*som omfattas av denna försäkring är i överensstämmelse med standarder:*  
*included in this declaration, follows the provisions of the:*  
*est conforme aux aux normes suivantes:*  
*den folgenden Normen entspricht:*  
*er i overensstemmelse med standarder:*

**SS-EN 60335-1: 2002+A11+A1+A12+A2+A13+A14**  
**SS-EN 60335-2-69:2009**  
**SS-EN 61000-6-3:2007**  
**SS-EN 61000-6-2:2005**

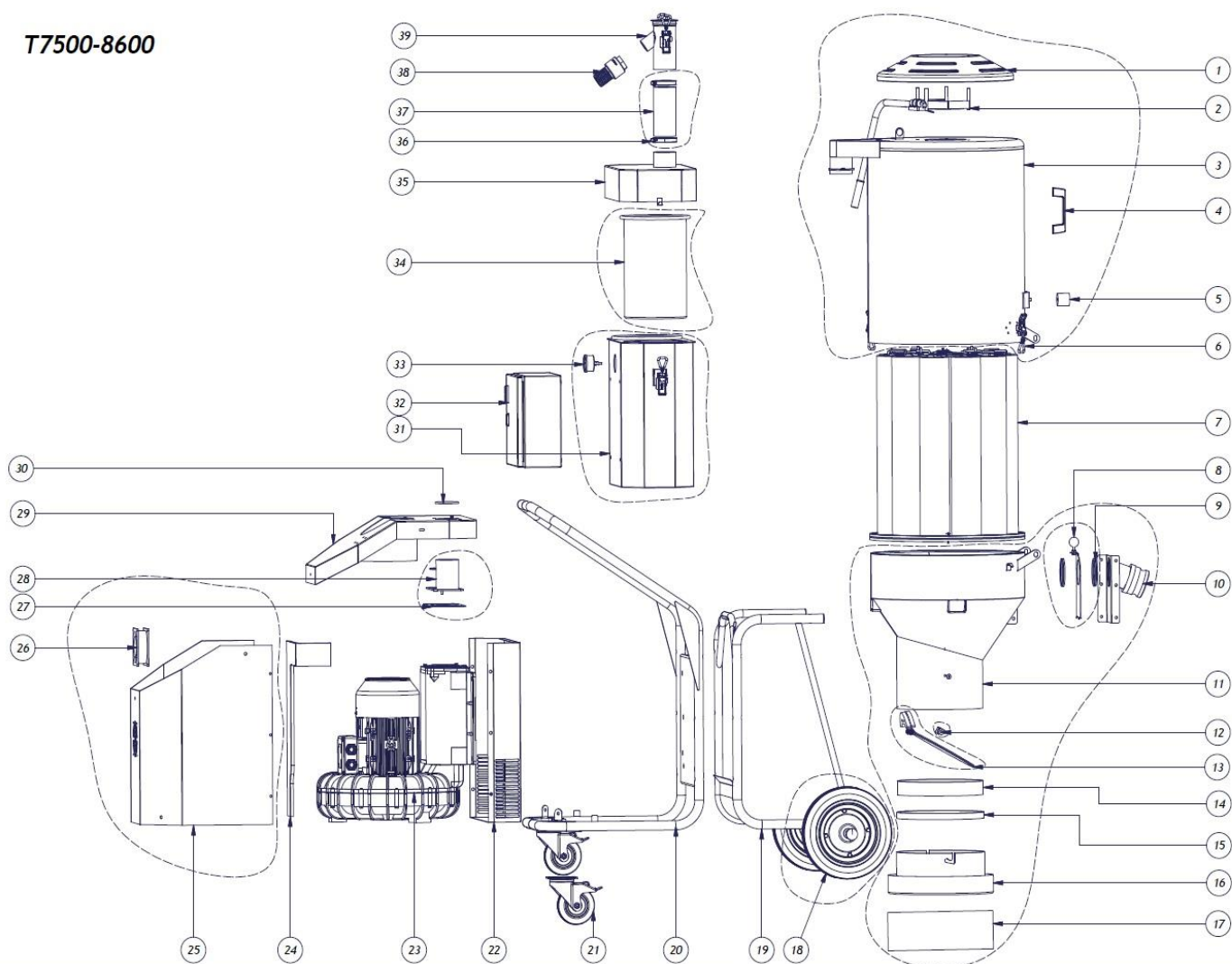
*enligt villkoren i/according to/selon/aut/i henhold til vilkårene i*  
**Machine Directive 2006/42/EC**  
**Low voltage Directive 2006/95/EC**  
**EMC Directive 2004/108/EC**

SMEDJEBACKEN 2016.06.14

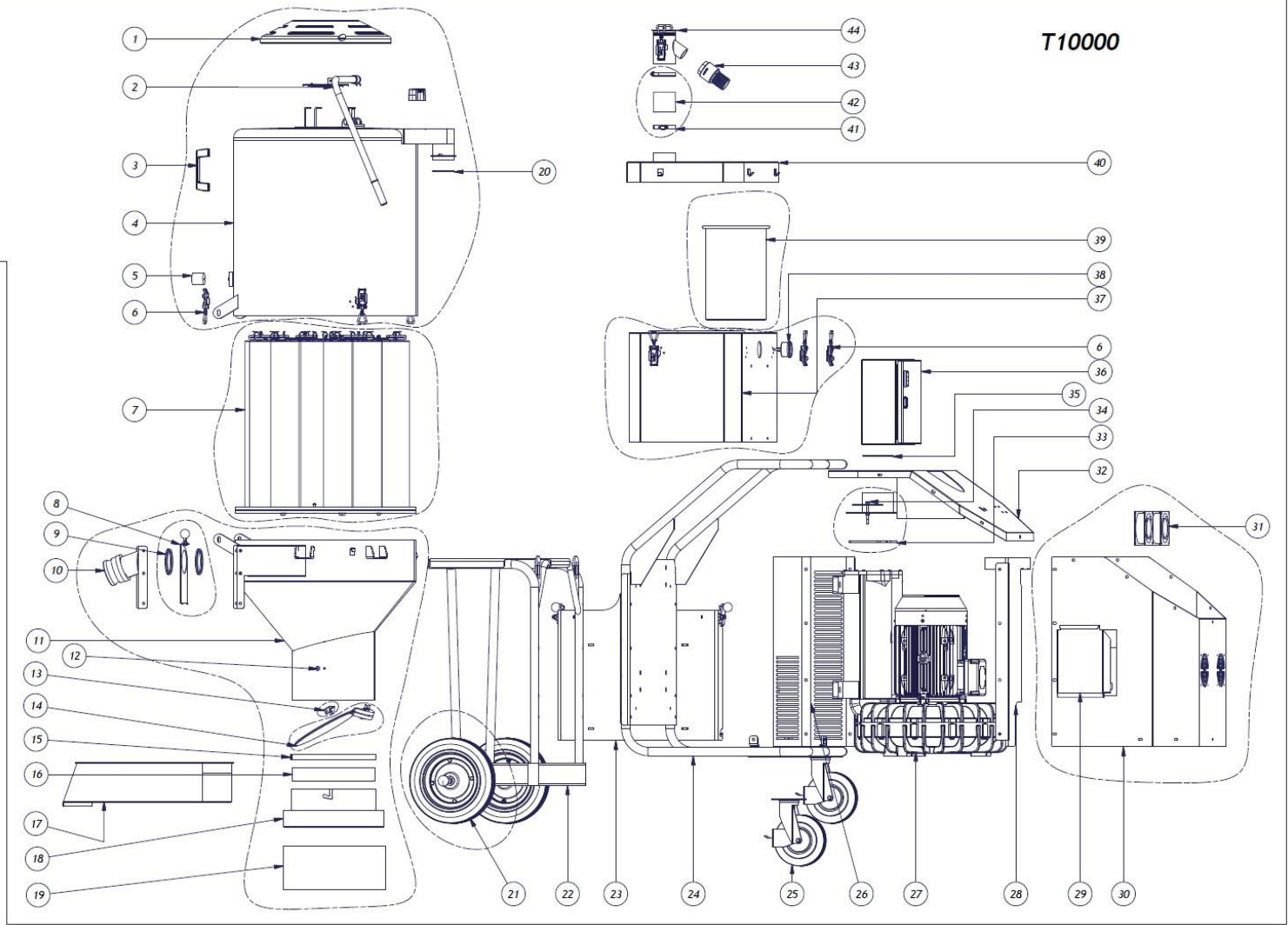
**Petra Bengtsson**

# 12. EXPLODED VIEWS

T7500-8600



T10000



This exploded view diagram illustrates the assembly of a mobile industrial machine, likely a mobile laboratory or testing unit. The components are numbered 1 through 35. The main body (1) is a large, rectangular unit with a control panel (2) and a handle (3). It is mounted on a mobile frame (4) with wheels (19, 20, 21, 22, 23). The frame includes a control panel (20) and a power switch (21). A large motor (24) is mounted on the side, connected to a power cord (25). The machine is equipped with a large storage compartment (26) and a smaller compartment (27). A control panel (28) is located on the side, and a control panel (29) is on the front. A control panel (30) is on the top, and a control panel (31) is on the side. A control panel (32) is on the front, and a control panel (33) is on the side. A control panel (34) is on the top, and a control panel (35) is on the side. The diagram shows the machine in its assembled state, with various components like the motor, control panels, and storage compartments clearly visible.

**T11000**  
**T12600**  
**T15000**  
**T18000**

# T7500/T8600

Pos	Qty	Part number	Description
1	1	200600656	Top Cover
2	1	200600655	Filter cleaning unit
3	1	200600657	Tank kit
4	1	200600658	Handle
5	1	1370022	Rubber stop
6	5	200600606	Excentric lock kit
7	1	200600596	Filter package kit
8	1	200600652	Valve inc. Gaskets kit
9	2	9698+9699	Gasket for inlet valve
10	1	201000028	Inlet plate 3" camlock
11	1	200600620	Lower tank kit
12	1	25007	Holder flap
13	1	200600621	Flap kit
14	1	1351162	Anti skid
15	1	1371001	Belt
16	1	200600536a	Longopac holder
17	1	1376013	Longopac bag
18	2	201200062	Front wheel kit (1 wheel + cap)
19	1	200600720	Wagon front
20	1	200600719	Wagon rear
21	2	25320	Caster wheel
22	1	20060714	Back cover kit
23	1	200900046	Vacuum pump 3x230 V (T7500 230 V)
23	1	5352003	Vacuum pump 3x480 V (T8600)
23	1	5352002	Vacuum pump 3x400 V (T7500 400 V)
24	1	200600713	Exhaust plate kit
25	1	200600712	Motor cover kit
26	1	1352060	Cooling fan motor cover
27	1	N/A	Contact vendor
28	1	200600718	Vacuum pump inlet plate kit
29	1	200600717	Top cover
30	1	N/A	Contact vendor
31	1	200600715	Hepa filter box kit
32	1	1262009	Electrical cabinet 7,5 kW (T7500 230 V)
32	1	1262010	Electrical cabinet 8,6 kW (T8600 480 V)
32	1	201000805	Electrical cabinet FZ (T8600F 400 V)
32	1	1262008	Electrical cabinet 5,5 kW (T7500 400 V)
33	1	1349116	Manometer
34	2	200600595a	Hepa filter H13 100% DOP tested
34	2	200600595	Hepa filter H13
35	1	200600716	Top cover hepa filter box
36	2	1357072	76mm (3") Hose clamp
37	0,15 (m)	1332039	Hose 76mm (3")
38	1	80683	Vacuum check valve
39	1	80830	Air regulator tube

# T10000

Pos	Qty	Part number	Description
1	1	200600656	Top cover
2	1	200800005	Filter cleaning unit (T11000)
3	1	200600658	Handle
4	1	201500056	Upper tank kit (T10000)
5	1	1370022	Rubber stop
6	5	200600606	Excentric lock kit
7	1	201300436	FILTER PACKAGE KIT (T10000)
8	1	200600652	Valve incl. Gasket kit
9	2	9698+9699	Gasket for inlet valve
10	1	201000028	Inlet plate 3" camlock
11	1	201500055	Lower tank kit
12	1	200800326	Nut for longpac holder on lower tank
13	1	25007	Holder flap
14	1	200600621	Flap kit
15	1	1371001	Belt
16	1	1351162	Anti skid
17	1	N/A	Contact Vendor
18	2	200600536a	Longopac holder
19	1	1376013	Longopac bag
20	1	1351239	O-ring 3"
21	2	201200062	Front wheel kit (1 wheel + cap)
22	1	N/A	Contact Vendor
23	1	201300490	Holder pre-sep kit (ex. T10000)
24	1	N/A	Contact Vendor
25	2	25046	Caster wheel
26	1	N/A	Contact Vendor
27	1	201500054	Vacuum pump 3x480 V 12,6 kW (T10000)
27	1	201500054a	Vacuum pump 3x400 V 11 kW (T10000)
28	1	N/A	Contact Vendor
29	1	N/A	Contact Vendor
30	1	N/A	Contact Vendor
31	2	1352060	Cooling fan motor cover
32	1	N/A	Contact Vendor
33	1	N/A	Contact Vendor
34	1	N/A	Contact Vendor
35	1	N/A	Contact Vendor
36	1	201500053	ELECTRICAL CABINET 12,6 kW 480 V (ex. T10000)
36	1	201500053a	ELECTRICAL CABINET 11 kW 400 V (ex. T10000)
37	1	N/A	Contact Vendor
38	1	1349116	Manometer
39	3	200600595a	Hepa filter H13 100% DOP tested
39	3	200600595	Hepa filter H13
40	1	N/A	Contact Vendor
41	2	1357072	76mm (3") hose clamp
42	0,15 (m)	1332039	Hose 76mm (3")
43	1	80683	Vacuum check valve
44	1	80830	Air regulator tube



# T11000/T15000/T18000

Pos	Qty	Part number	Description
1	1	200600656	Top cover
2	1	200800005	Filter cleaning unit
3	1	200600658	Handle
4	1	200700513	Upper tank kit
5	1	1370022	Rubber stop
6	5	200600606	Excentric lock kit
7	1	200700231	Filter package kit
8	1	200800007	Valve incl. gasket
9	2	200700328	Gasket for inlet valve
10	1	201000080	Inlet plate 4" camlock
11	1	200700500	Lower tank kit
12	1	25007	Holder flap
13	1	200600621	Flap kit
14	1	1371001	Belt
15	1	1351162	Anti skid
16	1	200700269	Bottom plate
17	1	200600536a	Longopac holder
18	1	1376013	Longopac bag
19	2	200800016	Front wheel kit
20	1	200500220	Stripe holder
21	1	200700516	Electrical cabinet 11 kW 400 V (T11000)
21	1	201500057	Electrical cabinet 12,6/18 kW 480 V (T12600,T18000)
21	1	201500058	Electrical cabinet 15 kW 230 V (T15000)
22	1	N/A	Contact Vendor
23	2	25046	Caster wheel
24	1	2360	VACUUM PUMP 11 kW 400 V (T11000)
24	1	200700515	VACUUM PUMP 12,6 kW 480 V (T12600)
24	1	201500059	VACUUM PUMP 15 kW 230 V (T15000)
24	1	201500060	VACUUM PUMP 18 kW 480 V (T18000)
25	1	N/A	Contact Vendor
26	1	N/A	Contact Vendor
27	1	806831	Vacuum check valve
28	1	200800003	Hepa filter box kit
29	1	1349116	Manometer
30	4	200600595a	Hepa filter H13 100% DOP tested
30	4	200600595	Hepa filter H13
31	1	200700343	Top cover hepa filter box
32	2	201200533	102mm (4") Hose clamp
33	1	200800004	Hose 102mm (4") kit
34	1	200800062	Hose connection 102mm (4") female

## 13. NOTES

[illegible]





*Clean air from Sweden*



**Pullman Ermator Inc.**

Phone: 855-736-2869

Fax: 813-685-6782

Address: 10702 N. 46th street - Tampa, FL 33617, USA

E-mail: [orders@ermatorusa.com](mailto:orders@ermatorusa.com)

**Pullman Ermator AB**

Phone: +46(0)240660960

Fax: +46(0)240663060

Address: Industrivägen 10, 77734, Sweden

E-mail: [info@pullman-ermator.se](mailto:info@pullman-ermator.se)