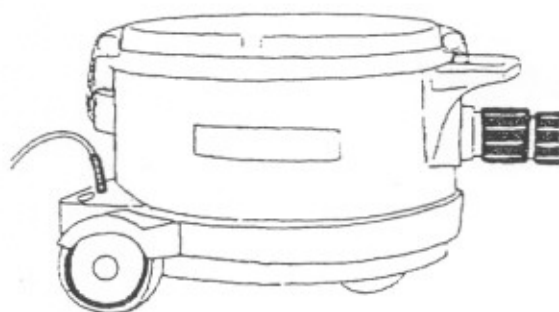


PV 930 +

PV 930 C



**RESERVDELAR
TILLBEHÖR**

**SPARE PARTS
ACCESSORIES**

DETALJSPECIFIKATION

SPARE PARTS LIST

PRODUKT/PRODUCT: PV930 NR./NO. 6319066

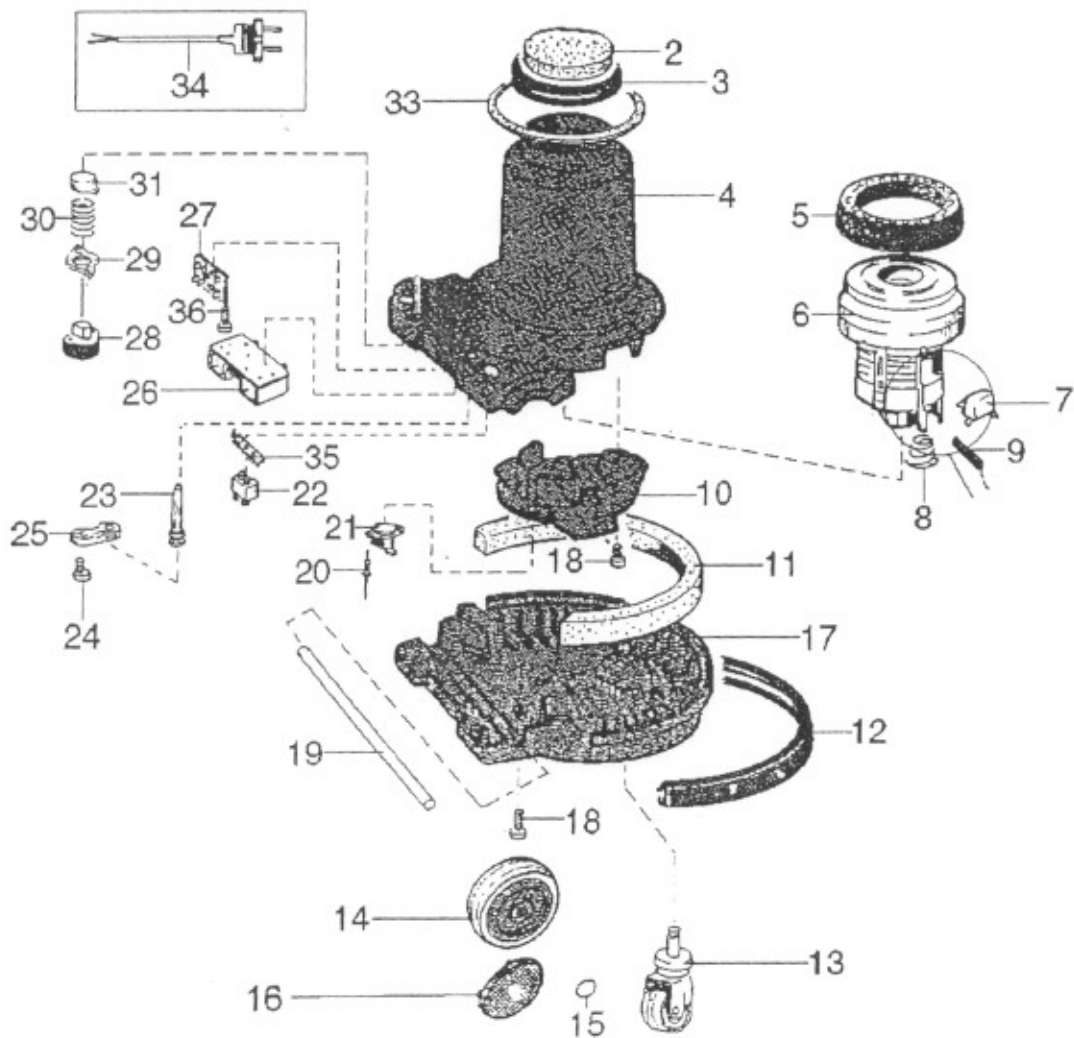
DET.NR. ITEM	ARTIKEL PART	BENÄMNING DESCRIPTION	ART.NR. PART.NO.	ANTAL QTY
1	1407802040	LOCK/Cover	6350049	1
2	1400061030	PACKNING/Sealing L=1130	6351024	1
3	1401515010	SKUMFILTER/Foam filter	6337025	1
4	1403260000	FILTERRONDELL/Filter <i>Filter</i>	4228021	1
5	1402666010	HEPAFILTER/Hepafilter	6337010	1
6	1402911000	FILTERHUS/Filter housing	6338011	1
7	EX008/10	PAPPERSPÅSE/Paper bag 10-p	6328001	1
8	1407832000	LOCKLÅS/Clamp	6342021	2
10	1407834000	KLACK/Nock	6357009	1
11	1409214070	SKRUV/Screw Torx50X14	6360102	1
12	1407020020	BEHÅLLARE/Container	6322025	1
13	TAP46	POPNET/Rivet	3359002	2
14	7404416000	O-RING/O-ring 49.5X3	6351063	1
15	1407013000	STOS/Scoop	6357007	1
16	1407800000	HANDTAG/Handle	6345019	1
17	1402915050	HANDTAG/Handle	6368449	1
18	1407014000	PÅSLÅS/Bag holder	6355042	1
19	1407807000	SPRINT/Sprint	6357008	2
21	1409214040	SKRUV/Screw Torx40X14	6360103	10

6338036

Komplett slangintag - 6345021

PV 930

UNDERDEL LOWER PART

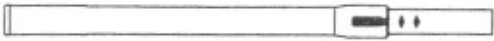
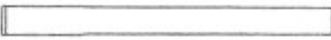


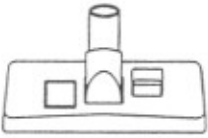


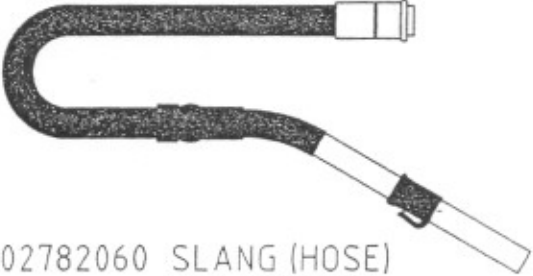


DETALJSPECIFIKATION

SPARE PARTS LIST

PRODUKT/PRODUCT: PV930 NR./NO. 6319066

DET.NR. ITEM	ARTIKEL PART	BENÄMNING DESCRIPTION	ART.NR. PART.NO.	ANTAL QTY
2	1401535000	FILTER/Filter	6337026	1
3	1402847000	V-RING/V-ring	6351064	1
4	1407010000	STATIV/Stand	6342009	1
5	1407901000	UPPHÄNGNINGSRING/Suspension ring	6353018	1
6	35356	MOTOR/Motor	6352040	1
7	1408166010	KONDENSATOR/Capacitor	6362123	1
8	1407016000	FJÄDER/Spring	6368450	4
9	1407719000	KOLBORSTE/Brush mechanism	6353017	2 1353147
10	1407012000	MOTORGAVEL/Motor plate	6350037	1
11	1407022000	LJUDÄMPLINGSLIST/Sound insulation list	6351042	1
12	1407018000	SKYDDSLIST/Bumper	6368447	1
13	1407025000	HJUL/Wheel	6343017	1
14	1405055010	BAKHJUL/Wheel	6343016	2
15	1405058000	LÅSKAPSEL/Cap	6357004	2
16	1407835000	NAVKAPSEL/Hub cap	6342022	1
17	1407011000	UNDERDEL/Basement	6342010	1
18	1409214070	SKRUV/Screw Torx50x14	6360103	14
19	1405059000	AXEL/Shaft 8mm	6368579	1
20	TAP46	POPNET/Rivet	3359002	2
21	1403894000	TEROMSKYDD/Thermoswitch	6362117	1
22	0109678000	KONTAKTHÅLLARE/Socket holder	6362121	1
23	1407035000	BRYTSKYDD/Strainer	6362013	1
24	1409214040	SKRUV/Screw Torx40x14	6360102	2
25	1406560000	AVLASTNINGSKLÄMMA/Clamp	6362118	1
26	1407026000	VARVTALSKORT/Speed card	6362119	1
27	1407024000	ANTISTAT-KORT/Antistatic board	6368453	1
28	1407033000	STRÖMSTÄLLARE/Switch	6362012	1
29	1401508000	BRICKA/Washer	6360105	1
30	1401522000	FJÄDER/Spring	6362116	1
31	1407805010	RÖD KNAPP/Red cap	6362104	1
33	1407021000	PACKNING/Sealing	6351062	1
34	1406423090	SLADDSTÄLL/Cord set	6361005	1
35	0117365000	LOCK/Cover	6362122	1
36	1407027000	SKRUV/Screw Torx 50x22	6360104	1

1		2		3		4		5		
Nr	Ant	Ändring		Datum	Inf.	Godk				
										
5022 TELESKOPRÖR (Telescopic tube) (EXTRA) Nr. 6324015										
										
5023 RÖRSKAFT (Tube) 750mm (EXTRA) Nr. 6324013										
5024 RÖRSKAFT (Tube) 500mm <i>x 2 = standard</i> Nr. 6324014										
										
EX039 BORSTMUNSTYCKE (Brush) Nr. 6326013										
										
LL001 FOGMUNSTYCKE (Crevice tool) (EXTRA) Nr. 6326015										
										
ZZ002 KOMBIMUNSTYCKE (Floor tool) Nr. 6326020										
										
5025 HANDTAGSRÖR (Suction tube) Nr. 6324023										
										
1403846000 SLANGKOPPLING (Hose adaptor) Nr. 6334010										
										
1402782060 SLANG (HOSE) NR. 6325017										
Det.nr		Ant.		Benämning			Material	Mod.nr ämne Dimension	Anmärkning	
Konstr.	Ritad	Kop.	MLO	Kontr.	Stand.	Godk.	Skala	1:10	Ersätter	Ersatt av
MLO	MLO	MLO	MLO							
Pullman Scand. AB				PV 930			Filnamn	Datum	2002.11.20	
Industrivägen 10				TILLBEHÖR/ACCESSORIES			Ritn.nr	2002137		
777 91 Smedjebacken										
1		2		3		4		5		